



Deck 6 modifications

The Challenge

Bilfinger Salamis UK were asked to develop and implement a solution to address Chevron’s increasing Person Onboard (POB) requirements caused by an aging facility increasing maintenance needs. The existing living quarters comprised of 60 beds, plus a further 8 beds within the Temporary LivingQuarter.

Future workload on the FPSO justified increasing the total capacity to 88 POB.



Conceptual cabin

The Solution

Bilfinger Salamis UK constructed two new living quarter areas within the inefficiently utilised bow space on decks 5 and 6. This comprises 10 new 2-man cabins, a gymnasium, quiet room, television lounge, sauna, washrooms, corridors, stairwells and storage facilities.

Due to the POB increase it was also necessary to upgrade a number of existing facilities spread over decks 6, 7 and 8 within the existing living quarters.

BILFINGER SALAMIS UK

FPSO ALQ POB INCREASE

EXISTING AND FORESEEABLE WORKLOAD JUSTIFIED A CONVERSION TO ACCOMMODATE INCREASED POB

Architectural Outfitting Specialist Services

Client
Chevron

Location
Captain FPSO



Deck 5 & 6 New Living Quarters

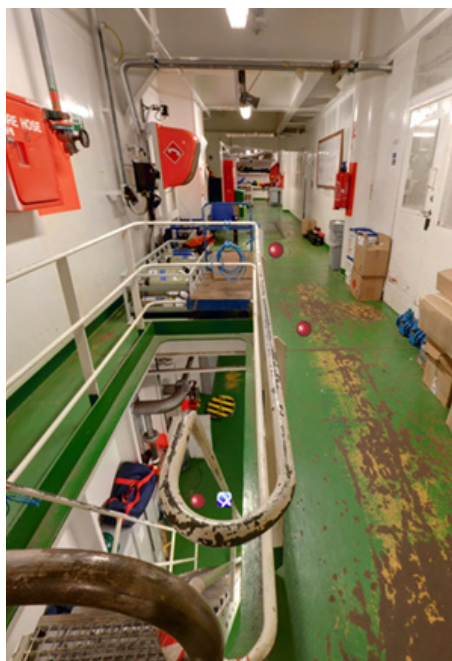
- 10 new two-man cabins
- New gymnasium
- New non-smoking TV cinema
- New non-smoking quiet room
- New toilet / washroom facilities
- New cleaners closet
- New sauna / shower room
- New tea point
- New corridor areas
- Two new storage closets



Conceptual cabin



Actual cabin



Stairwell before



Stairwell after



Main access corridor before



Main access corridor after



Washroom facilities



New corridor and doors

Deck 5 & 6 New Living Quarters

- New corridor areas

Deck 6 Existing LQ Upgrades

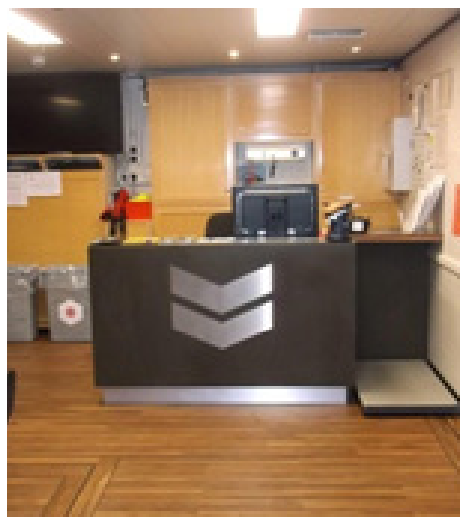
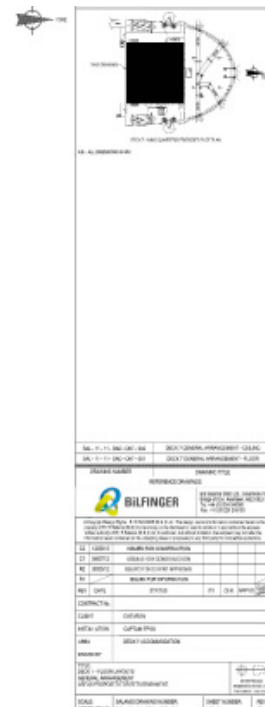
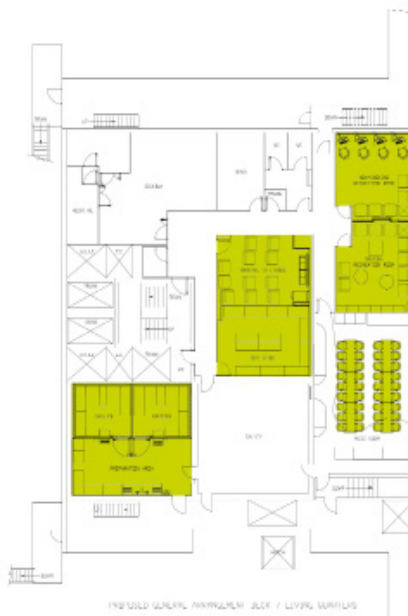
- Locker room
- Toilet / washroom facilities
- Clean corridor refurbishment
- 'Link' corridors

Deck 7 Existing LQ Upgrades

- Non-smoking recreation room
- Smoking recreation room
- Smoking TV lounge
- Dry store
- Cold store
- Food preparation area
- Mess area

Deck 8 Existing LQ Upgrades

- Heli-Admin



Heli-administration



The Outcome

Not only did Bilfinger Salamis UK's work aboard the Captain FPSO result in client satisfaction but also in a programmed increase for all future planned operations and maintenance.

The new specification for cabin design created by our architectural department, never before used on another vessel, exceeded all current cabin standards when independently tested.

Bilfinger Salamis UK

4 Greenhole Place · Bridge of Don
 Aberdeen · Scotland · AB23 8EU
 Phone +44 1224246000
 info.salamis@bilfinger.com
 www.salamis.bilfinger.com